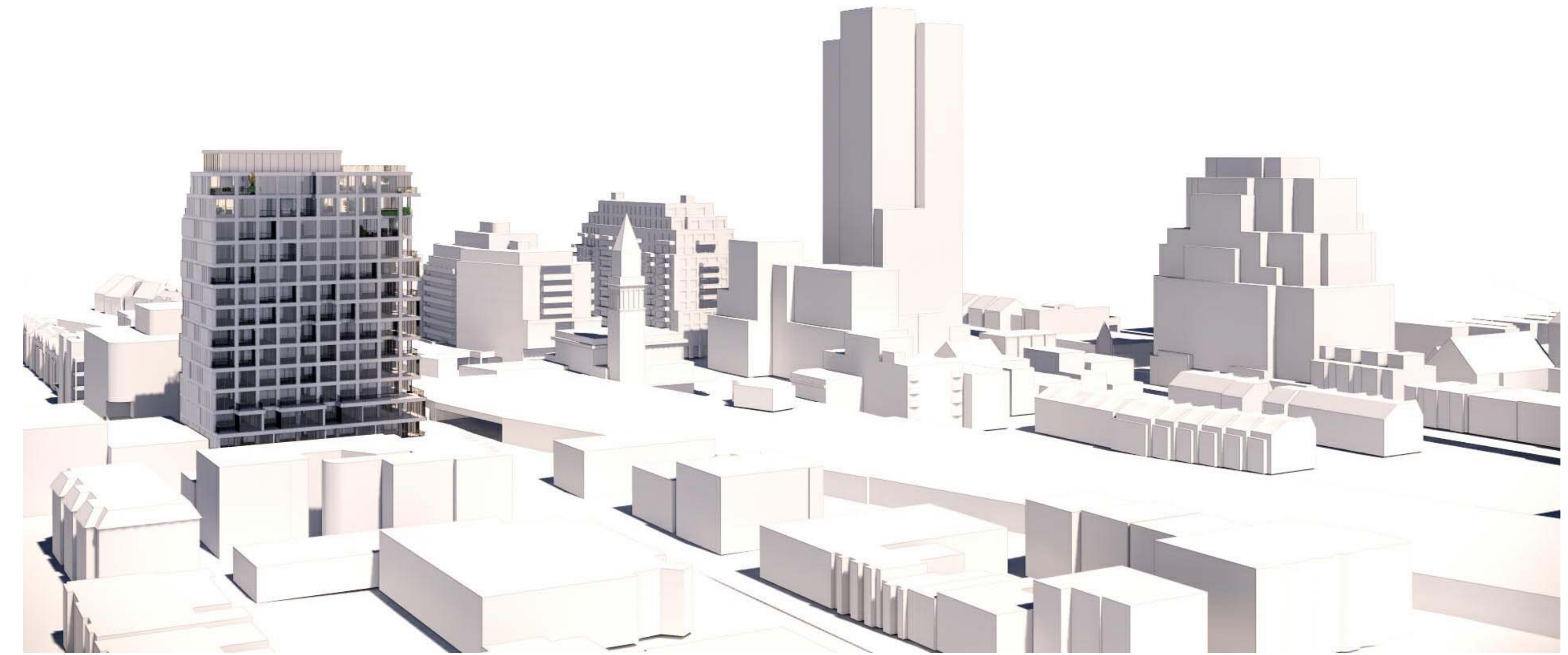
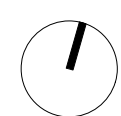
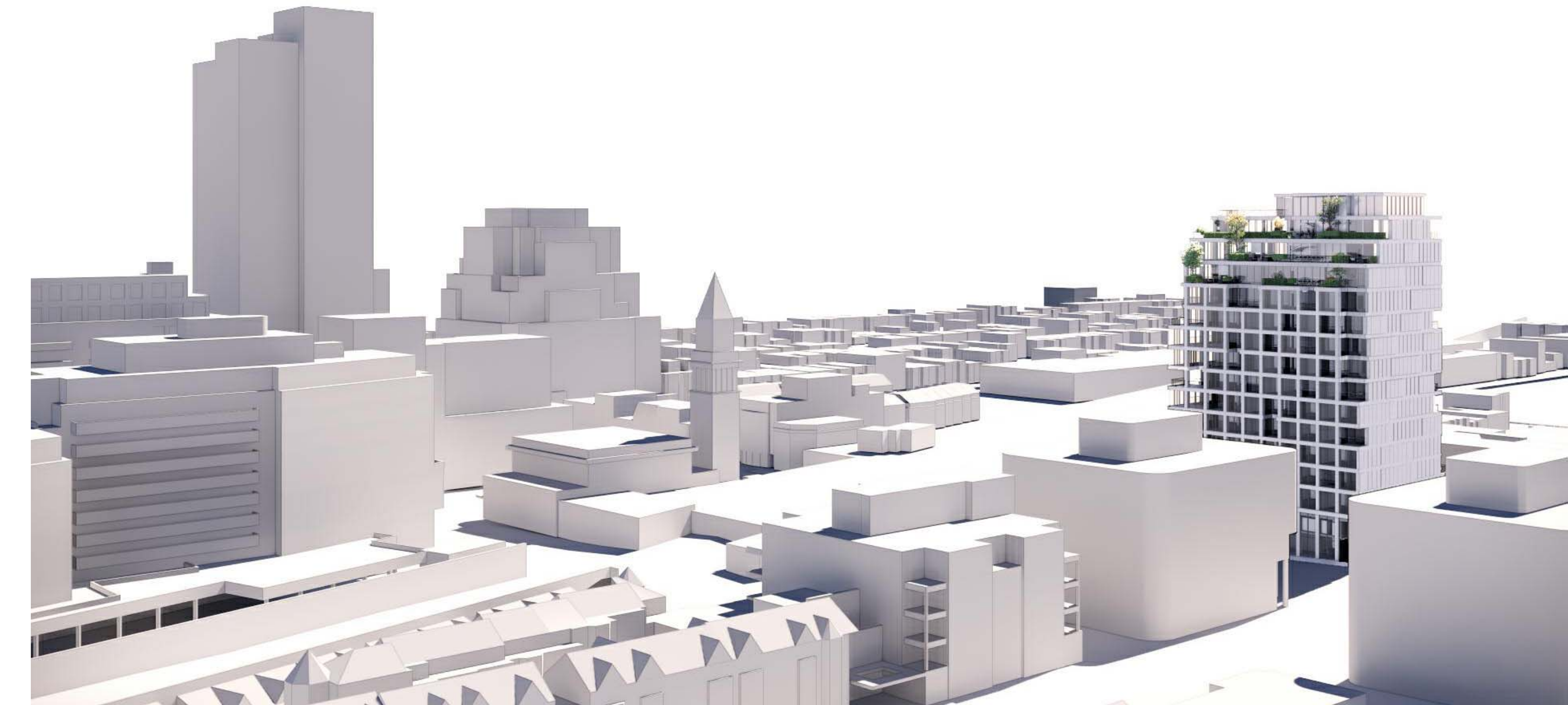


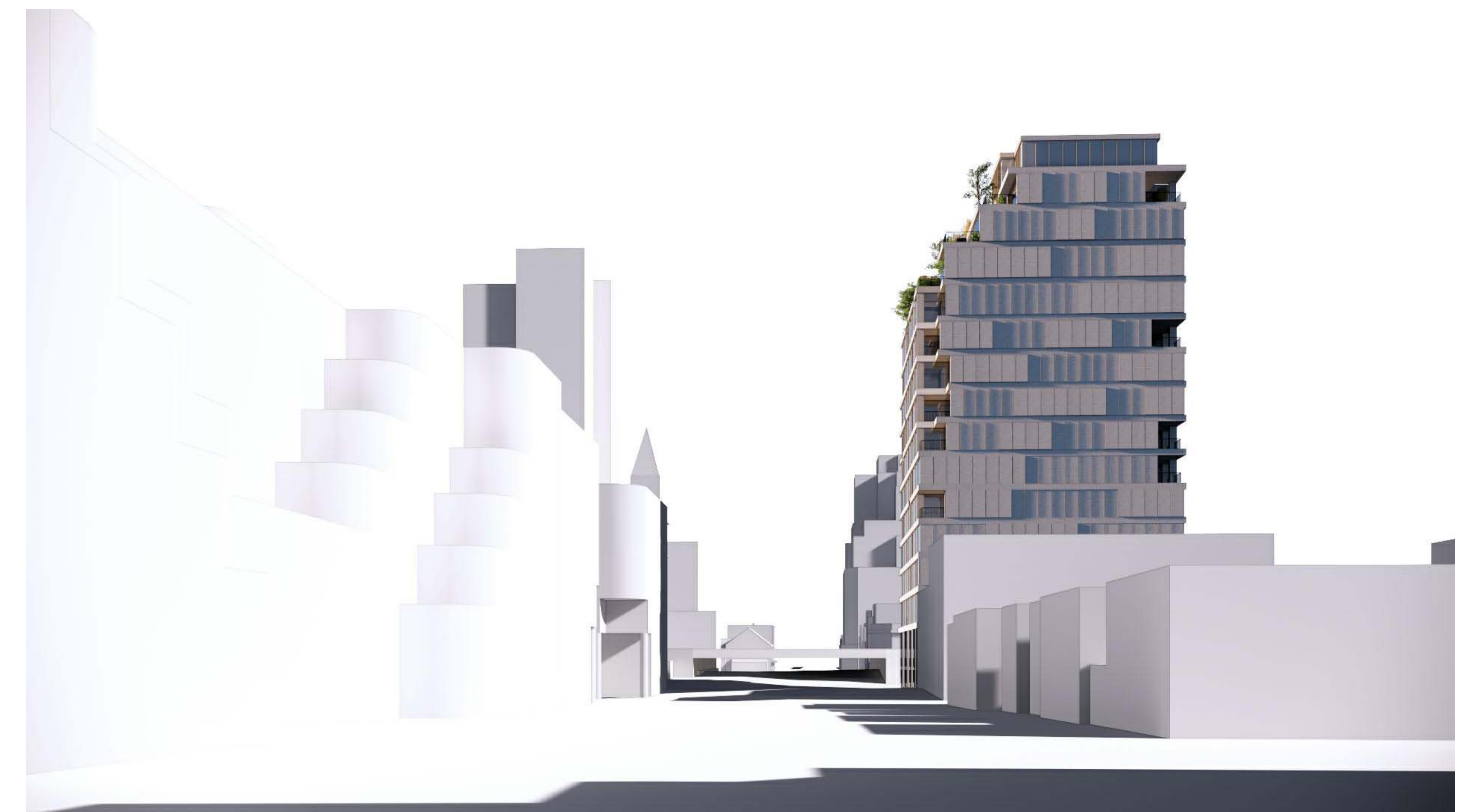
SCALE 1:1000



AERIAL LOOKING SOUTHEAST



AERIAL LOOKING SOUTHWEST



YONGE STREET LOOKING SOUTH

Copyright is that of the Architect. Any version of this drawing reproduced by any means from any media without prior written approval of the Architect is to be read for information only. The Architect is not liable for any loss or distortion of information resulting from subsequent reproduction of the original drawing.

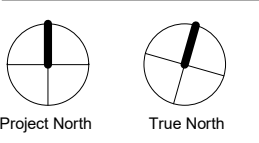
- GENERAL NOTES:**
1. Drawings are not to be scaled. Contractor will verify all existing conditions and dimensions required to perform the Work and will report any discrepancies with the Contract Documents to the Architect before commencing work.
 2. The Architectural Drawings are to be read in conjunction with all other Contract Documents including the Project Manuals and the Structural, Mechanical and Electrical Drawings. In cases of difference between the Consultant's documents with respect to the quantity, sizes or scope of work, the greater shall apply.
 3. Positions of exposed or finished Mechanical or Electrical devices, fittings and fixtures are indicated on the Architectural Drawings. Locations shown on the Architectural Drawings shall govern over Mechanical and Electrical Drawings. Mechanical and Electrical items not clearly located will be located as directed by the Architect.
 4. Dimensions indicated are taken between the faces of finished surfaces unless otherwise noted.
 5. The architect has not been retained for supervision of construction and assumes no responsibility for means, methods and techniques of construction.
 6. These documents are not to be used for construction unless specifically noted for such purpose.

Rev.	Date	Issued
1	2021/11/09	ZBA Submission

KPMB
 KPMB Architects
 322 King St W, 3rd Fl
 Toronto, ON, Canada M5V 1J2
 416 977 5104

Woodville
1196-1210 YONGE ST.

DRAFT



SCALE 1:500
 PROJECT NO. 1714
 ISSUE DATE 29.01.21

CONTEXT PLAN

A1.002